

# HAND HELD TRAY

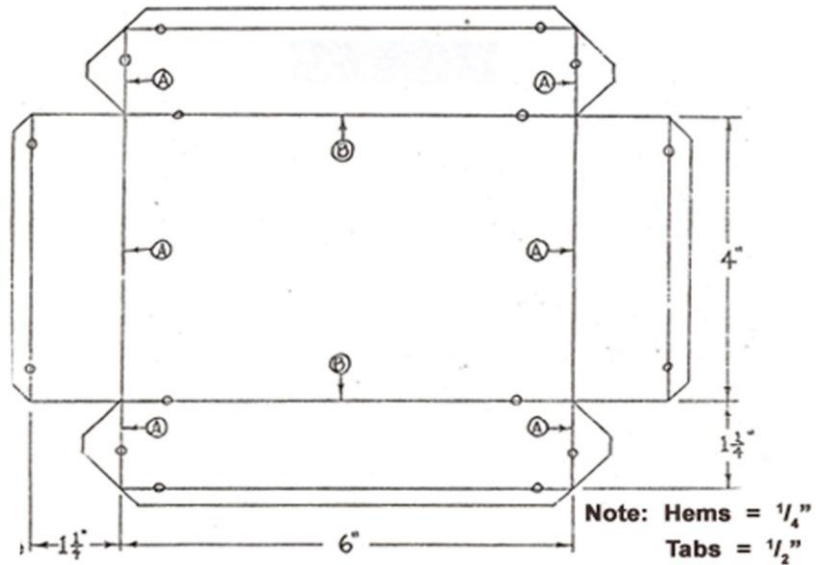
Page 1 of 2



## PROCEEDURE

1. Layout
2. Cut
3. Fold and flatten hems inside
4. Fold ends and tabs A
5. Fold sides B
6. Spotwield
7. Deburr

MATERIAL  
28 GA. GSM



Tom Fosseen  
PO Box 614  
High Rolls Mtn Park, NM 88352

**SAFETY WARNING!** The use or ingestion of any item may be injurious to your or other's health. Before using observe all safety rules, use complete care, heed competent advise, consult OSHA, Washington, DC 20210.

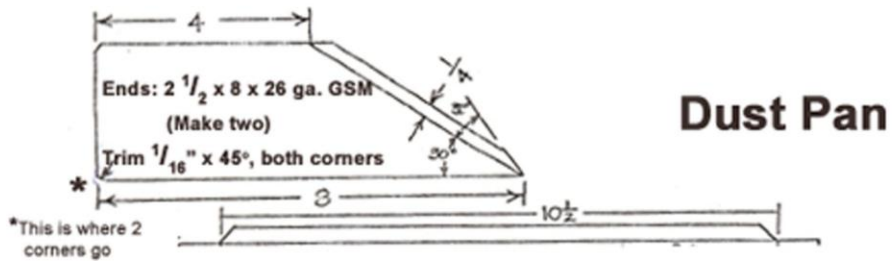
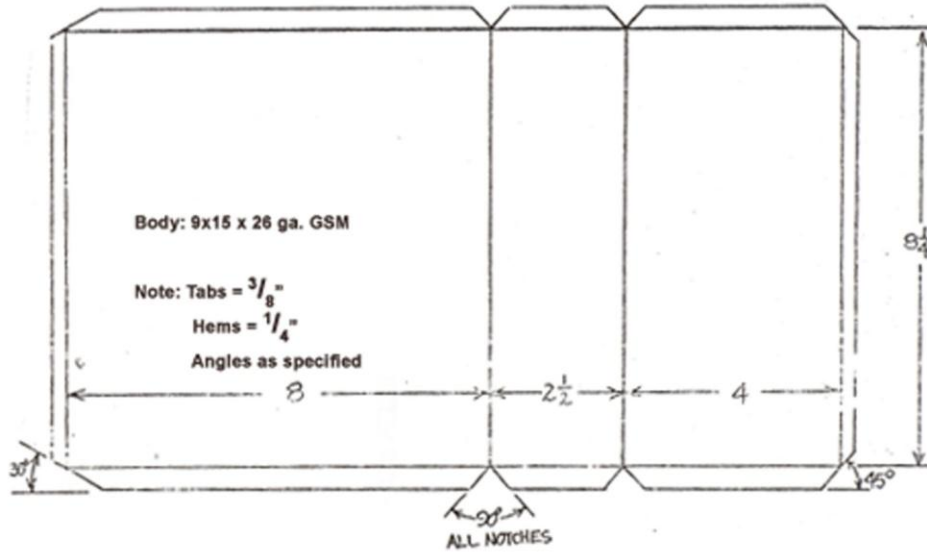
©Copyright 2009 Tom Fosseen, Shop Supply House.

# HAND HELD TRAY

Page 2 of 2

## PROCEEDURE

1. Layout ends and cut (Save triangle scrap to use as 30 degrees template)
2. Layout and cut 30 degrees hem on pointed end
3. Fold hems of ends to opposite sides
4. Layout and cut body - use end scrap to get 30 degrees on side tabs
5. Fold and flatten hems
6. Fold tabs 90 degrees
7. Fold body
8. Layou and cut handle
9. Fold and flatten hems
10. Form curve over mandrel stake
11. Spotweld
12. Deburr



Tom Fosseen  
PO Box 614  
High Rolls Mtn Park, NM 88352