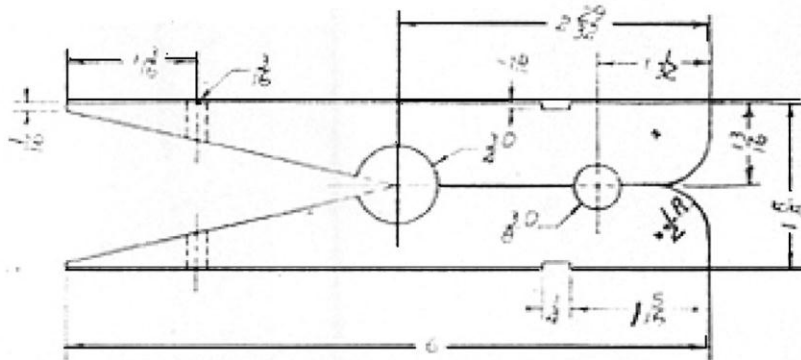
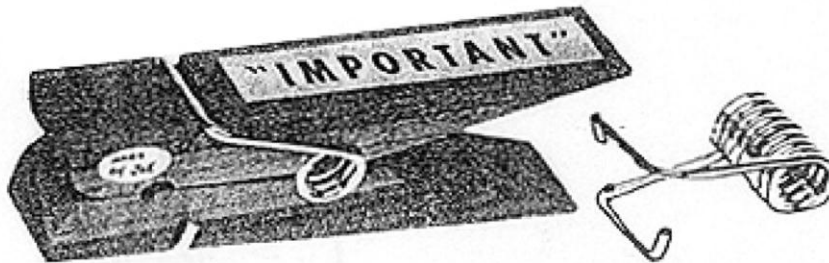


SPRING CLIP

Page 1 of 1



TYPICAL TYPICAL TOOLS AND STEPS USED IN MAKING THE JUMBO CLIP

- 1 Try Square: Mark wood block for starting dimensions of 1-1/8" X 1-5/8" X 6-1/8" (If 1-5/8" material is not readily available, two pieces of 13/16" material can be glued together.)
- 2 Plane: Plane block to size, using block and jack planes
- 3 Ruler: Mark centerline and mark three spots for drilling
- 4 Drill Press: Drill 3/16", 3/8" and 3/4" holes
- 5 Band Saw: Make two diagonal cuts, from corners to center point of 3/4" hole
- 6 Band Saw: Make centerline cut, from apex of triangle to end of block.
- 7 Band Saw: Trim off sharp ends by cutting each "half clip" to 6"
- 8 Ruler: Measure and mark edges of dado for the spring arm.
- 9 Band Saw: Dado 1/4" wide, 1/16" deep on both sides of "half clip"
- 10 Ruler: Measure and mark radius for "nose" of clip
- 11 Band Saw: Cut 1/2" radius on each "half clip."
- 12 Disc Sander: Sand all cuts, and round ends
- 13 Paint Brush: Apply protective finish
- 14 Finish: Assemble jumbo clip and attach title plate

Tom Fosseen
PO Box 614
High Rolls Mtn Park, NM 88352

SAFETY WARNING! The use or ingestion of any item may be injurious to your or other's health. Before using observe all safety rules, use complete care, heed competent advise, consult OSHA, Washington, DC 20210.